



Fairhazel Gardens NW6

Parkheath
Sold on Service





Fairhazel Gardens, NW6

£825,000

Share of Freehold

- Charming and well proportioned two-bedroom garden flat
- Nestled within the sought-after South Hampstead Conservation area
- Chain free
- Bright and spacious 18' bay fronted reception room
- Large 16' master bedroom with fitted wardrobes and direct access to private garden
- 855 sq ft/79.43 sq m
- Period fireplace feature, large windows and wooden floors
- Separate utility room
- 0.4 miles to Finchley Road Underground station and 0.2 miles to South Hampstead Overground
- EPC Rating: D



Parkheath
Sold on Service

Camden Tax band E

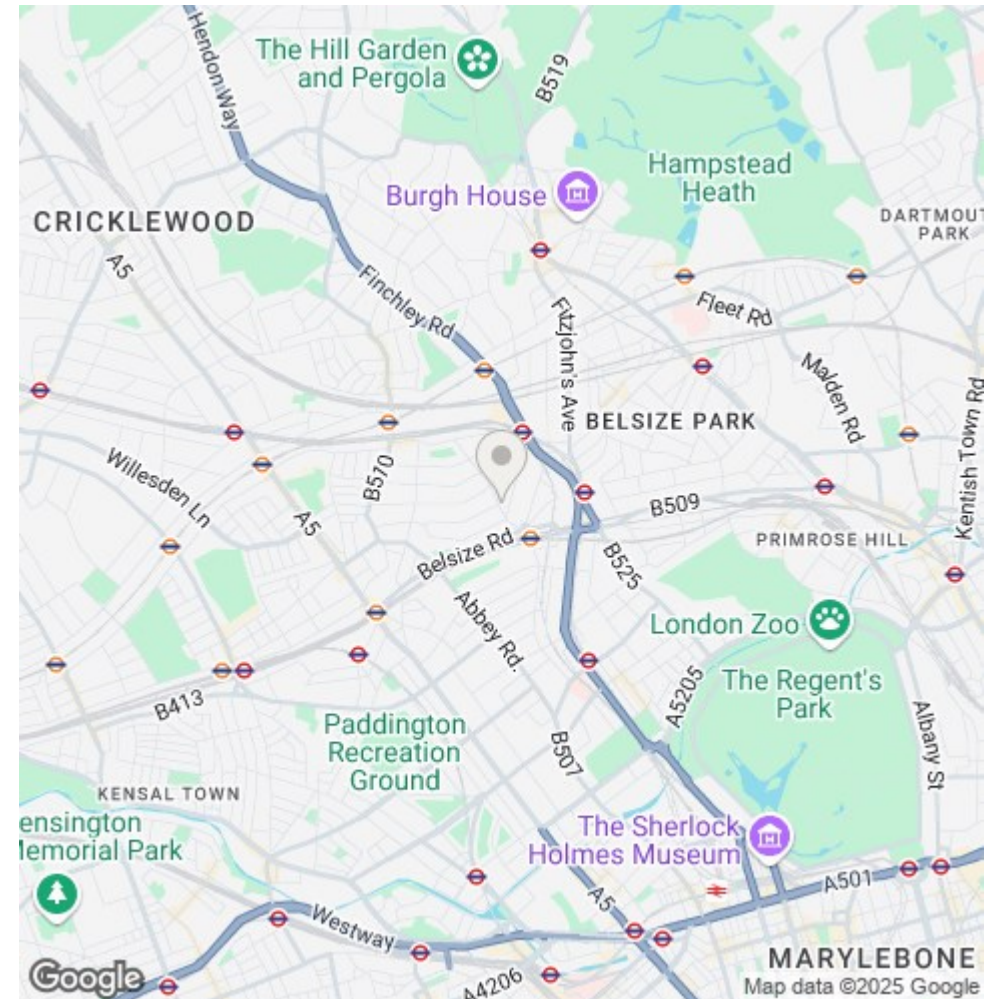
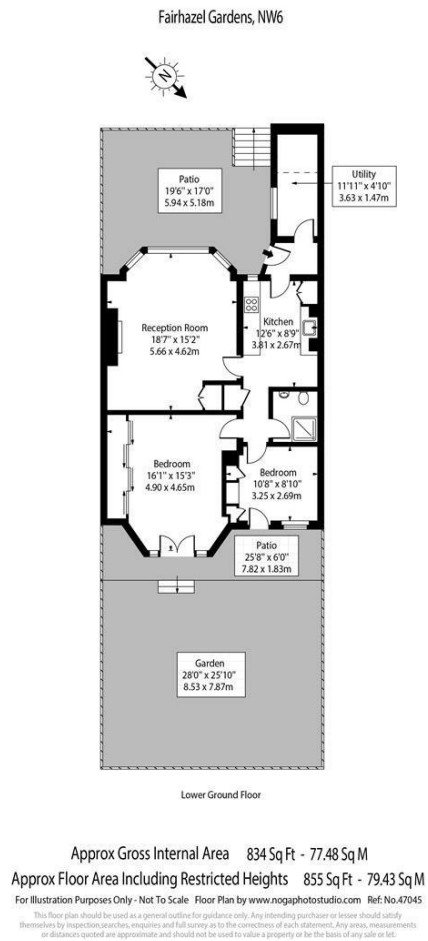
Belsize Park/Hampstead
208 Haverstock Hill
NW3 2AG
Sales 020 7431 1234
Lettings 020 7431 3104
nw3@parkheath.com

Kensal Rise
54-56 Chamberlayne Rd
NW10 3JH
Tel 020 8960 4845
kensal@parkheath.com

South/West Hampstead
192 West End Lane
NW6 1SG
Sales & Lettings
Tel 020 7794 7111
192@parkheath.com

Property Management
192 West End Lane
NW6 1SG
020 7433 6174
pm@parkheath.com

www.parkheath.com



The particulars do not constitute part of an offer or contract. The particulars, including text, photographs and plans, are for the guidance only of prospective purchasers/tenants and must not be relied upon as statements of fact. The descriptions provided therein represent the opinion of the author and whilst given in good faith should not be construed as statements of fact. Nothing in these particulars shall be deemed a statement that the property is in good condition or otherwise or that any services or facilities are in good working order. All measurements are approximate